



1962 to 1965 Mopar Swap Meet

The 1962 to 1965 Mopar swap meet update will take place ONCE a month, usually during the first week of the month. The listings will remain until sold.

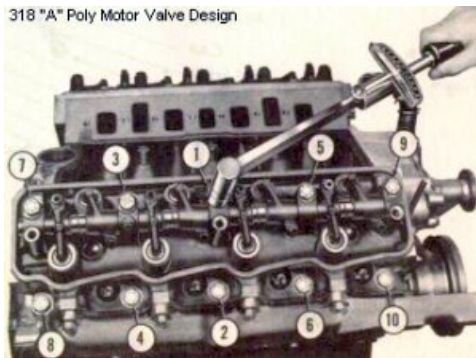
Did we help your restoration? [Support the 1962 to 1965 Web site with a donation.](#)

NOTE: These listings are placed here as is and as received. BE CAREFUL! Do your best to confirm the person actually has the item to sell before any money changes hands! Do not buy if you are not positive! Remember C.O.D. is an option, too. In any case, in the U.S.A. use a postal money order to pay for the item, and send payment by U.S. Mail. While we assume no liability for these listings, we want to help people maintain and restore 1962 to 1965 Mopars. Buyer beware is a good motto to remember in any Web transaction!

Please contact the advertiser to verify the accuracy of the information contained in these ads. The advertisers and the 1962 to 1965 Mopar Web Site expressly disclaim any and all liability for typographical errors, mistakes or misprints.

Free [Mopar Poly engine](#) build plans, consultation, and your most knowledgeable source for all stock and High Performance Poly engine parts. Gary Pavlovich Call six one nine 572.3008

(California timezone)



Poly engine parts for sale. Attention Polyheads: I have many OEM/stock Poly 277-318-326 and High Performance **Poly Camshafts** available in both Solid and Hydraulic patterns and can custom grind for any application; Street/Street / Strip / Turbo / Supercharger / RACE. Please let me know your needs and I will counsel you on the proper Poly grind to meet your driving or Hot-Rodding goals. Complete or partial engine build plans and recommendations are a pleasure for me so

feel free to send an email to [glpavlovich @ cox.net](mailto:glpavlovich@cox.net) and we can talk about your Mopar Polyspherical engine. I am also available to talk 'live' (See above paragraph for contact phone.)

For sale: super/stock aluminum seat brackets. \$200 set of 4 and the price includes shipping from Mason City, Iowa 50401. Contact [mopardaddy at FastFreddieparts@gmail.com](mailto:mopardaddy@FastFreddieparts@gmail.com) – I need payment to order the brackets. I have to have at least 6 pre-orders for the company to make them. PayPal only to mopardaddy56@yahoo.com



Charlie 65Satelliteman's 1962 to 1965 Mopar Restoration Services and Parts For Sale

- * Steering wheel restoration to high point scoring quality.
- * Armrest sets completely restored for all of the 1962, 1963, 1964 and 1965 A, B and C body Mopars to like, or better than new, condition in some instances.
- * High quality replacement grill emblems for the 1965 Belvedere I, 1965 Belvedere II, 1965 Plymouth Satellite, 1965 Plymouth Fury I-II-III and 1965 Sport Fury. (Usually all of the five models of grill emblems made go on Ebay with a starting bid price of \$130.00 including free priority mail shipping in the continental USA. International shipping is available.)
- * 1965 Dodge Coronet 440 and 500 rear trunk emblem inserts for sale
- * 1962 Plymouth Savoy, Belvedere, Fury and Sport Fury hood and trunk emblem inserts now for sale.

Charlie has thousands of nice rare parts for early B-bodies that he will be selling off due age and health issues. Most of the parts are for the 1965 Plymouth Belvedere and Satellite models, but there are still quite a few out in the warehouse for the other B bodies as well.

Phone Charlie (65Satelliteman) week nights, only between 6pm to 9pm eastern time, with any questions or parts inquiries at 989-362-8463 or email mitzi265@hotmail.com

Bruce at **Toth Performance** makes poly engine and Hemi engine exhaust adapters.



“Generation 3 stock manifold or header to poly head adapter's I designed for the early poly trucks and the 1955 to 1961 poly-powered autos that can't find headers at a reasonable price. It appears that the 6.1 Jeep stock manifolds may fit the 1962 to 1965 B-body Mopar cars also. After some test fitting I will know for sure soon and report the results. Finger's crossed!”

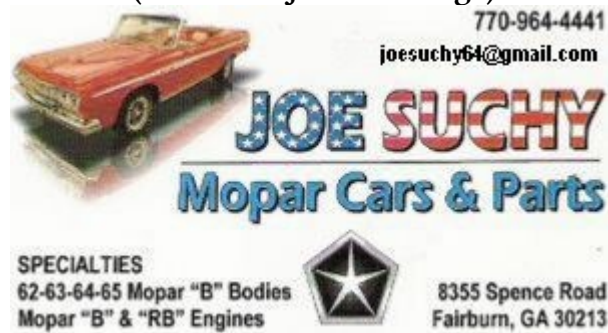
Click on photo for a larger view.

Toth Performance – High performance engine building for street or race, Cylinder head porting; all work done on a "Super Flow" bench. Contact Bruce Toth for a price quote or consult. tothperformance@zoominternet.net -- Phone 724.791.2514 in PA or 724.290.2497(cell)



“I also make a Generation 1 Hemi 331 to 392 blockhugger header to poly head adapter. Also pictured are stainless blockhugger 392 headers, which I carry also. These are designed for straight axle vehicles like the early poly powered Dodge trucks or a straight axle equipped street rod. I realize these have nothing to do with the 1962 to 1965 Mopar website unless fans of those Mopars are making a poly-powered straight axle gasser.”

**New Reproduction Mopar Parts For Sale from Joe Suchy.
(Prices subject to change)**



Unit Item / Description

- \$36.00 set 1962-1965 "B" body battery tray w/support bracket**
- \$70.00 each Battery tray - Max Wedge trunk mount**
- \$50.00 Weld in hold down bracket kit for the trunk mount battery**
- \$79.00 kit Battery hold down kit for the Max Wedge trunk mount battery**
- \$150.00 kit Trunk mount battery vented caps, seals, hoses, floor plug Made in USA**
- \$0.75 each Battery tray hold down bolts (5/16-18 thread w/pointed tip)**
- \$12.00 set 1962-1969 Battery hold down J-bolts w/wing nuts**
- \$21.00 set 1960-1965 All bodies, Battery hold down and J bolt combo**
- \$130.00 each 1962-1964 "B" Positive battery cable (90 degree end) Made in USA**
- \$135.00 each 1965 "B" body positive battery cable (straight end) Made in USA**
- \$50.00 each 1962-1964 "B" Negative battery cable (90 degree end) Made in USA**
- \$40.00 each 1965 "B" Negative battery cable (straight end) Made in USA**
- \$60.00 each Solid state instrument voltage limiter**
- \$45.00 set Big block alternator bracket, bolts, and spacers**
- \$15.00 set Big block alternator bolt and spacer package**
- \$65.00 each Idler pulley, 1962-1974 engines with A/C**
- \$55.00 kit 1962-1968 "B" Metal fan shroud brackets, nuts, and bolts**

\$245.00 each 1962-1968 "B" Metal fan shroud - 2 pieces

\$65.00 set Pre-1969 Big block and Hemi P/S pump bracket (TRW/Thompson pump) USA

\$29.00 each 1957-1969 Small block oil dipstick tube Made in USA

\$15.00 set Generic chrome big block tube w/dipstick

\$55.00 set Correct big block tube w/dipstick 1962-1965 "B" and 1965-1968 "C"; also works on 1958-1961. Made in USA

\$7.00 each Radiator overflow hose (specify 19 inch, 22 inch or 26 inch radiator)

\$20.00 each Radiator cap, 14 pound, 1960-1966 all models MADE IN USA

\$185.00 pair 1963-1965 Big block and Max wedge, 6 bolt valve covers, unpainted

\$35.00 pair 4 bolt valve cover gaskets. 350,361 383, 413, 426 MADE IN USA

\$70.00 pair Hemi "K" head valve cover gaskets MADE IN USA

\$47.00 each 1962-1967 push on chrome valve cover breather cap (OIL)

\$50.00 each PCV valves w/nut, 1963-1969 all models MADE IN USA

\$21.00 each PCV valve mounting cup w/spring, unpainted

\$38.00 each PCV valve mounting cup w/spring, chrome

\$21.00 each 1962-1967 push on unpainted valve cover breather cap (OIL)

\$55.00 each 1965 "B" and 1965-1969 "A" Windshield washer reservoir (Will work on 1964 "B")

\$0.75 each Windshield washer reservoir screws with sems washer MADE IN USA

\$45.00 each 1959-1966 Electric windshield washer pump

\$5.00 each "F" Connector - windshield washer hose

\$18.00 each 1963-1969 Engine to firewall ground strap (Hemi, Big and Small block)

\$12.00 each V-8 Distributor cap, point type ignition

\$23.00 each Coil mounting bracket, Big block, Hemi, and 6 cyl. Made in USA

\$29.00 each Intake manifold vacuum fitting, 1/8 inch nipple Made in USA

\$39.00 each Intake manifold vacuum fitting, 3/8 inch and 1/8 inch nipples Made in USA

\$35.00 each 1956-1972 Ballast resistor w/screw - all bodies

\$15.00 each 1961-1965 Starter relay--Specify auto. or manual transmission

\$11.00 each Wire-Neutral safety switch to starter relay

\$15.00 each 1962-1970 Horn relay

\$12.00 each 1965-UP? Fusible link

\$13.00 each 1969-down Black engine harness 8 prong plug

\$8.00 each Dimmer switch 1959-1980 cars and 1959-1989 trucks

\$5.00 each 1960-1969 All-Door jamb switch/courtesy light

\$50.00 each Delete plug, blower switch hole, 1964-1965 "B" body

\$20.00 each 1963-1964 "A" and "B" Plymouth headlight switch knob will shaft

\$10.00 each 1963-1964 "A" & "B" Plymouth headlight switch retainer nut

\$15.00 each 1963-1964 "A" & "B" Plymouth wiper switch knob

\$15.00 each 1963-1964 "A" & "B" Plymouth wiper & blower switch nut

\$80.00/\$70.00 each 1964-1965 Mopar "B" body reconditioned speaker, front, 7" round, outright/exchange

\$80.00/\$70.00 each 1962-1963 front, 1962-1965 rear "B" Reconditioned speaker, 6 X 9 oval, outright/exchange

\$15.00 each Ignition lock tumbler w/keys-1948-1968 cars and 1961-1972 trucks

\$30.00 set Ignition lock tumbler and door locks w/keys - 1966-1968 Cars

\$30.00 each Ignition switch wo/lock tumbler 1960-1968 cars

\$20.00 each Universal trunk lock w/keys, retainer clip, asst. shafts - 1962-1972 cars

\$6.00 each Trunk lock key blanks 1962-1972 Made in USA

\$50.00 each Original replacement trunk lock and keys w/gasket (no blade) 1959-1965 "A" and "B" body each

\$39.00 each Console lid/glove box door lock

\$60.00 each 1962-1966 Turn signal switch

\$10.00 each 1962-1966 Turn signal canceling cam

\$70.00 each 1964 Savoy and Valiant horn button adapter

\$0.50 each 1962-1965-Horn ring to switch insulator bushing

\$0.35 each Screws for horn ring insulator bushings (3 for \$1)

\$20.00 each 1962-1990 Steering column ball bearing

\$38.00 each 1962-1965 "B" Steering column cover, bottom of dash

\$9.00 each 1960-1965 Seat adjust knobs

\$5.00 each 1960-1969 heater hose strap (soft aluminum)

\$15.00 set 1964-1969 big block/hemi-heater hose nipple kit (two 5/8 hoses)

\$11.00 kit 1962-1969 big block "Corbin" hose clamp kit

\$11.00 kit 1962-1969 small block "Corbin" hose clamp kit

\$10.00 kit Slant 6 Cyl., "Corbin" hose clamp kit

\$70.00 set 1966-1967 Big block Spark plug wire loom kit

\$60.00 set 1962-1965 Big block and Max Wedge Spark plug wire loom kit

\$17.00 each Big block #7 Spark plug wire heat shield (1967 and later HP manifold)

\$17.00 each Big block #6 and #8 Spark plug wire heat shield (1967 and later HP manifold)

\$17.00 each Big block #7 Spark plug wire heat shield ("B" 1962-1965, 1966-1969 2bbl, 1966 383 4bbl) Made in USA

\$17.00 each Big block #8 Spark plug wire heat shield ("B" 1962-1965) Made in USA

\$7.00 each 3/8 - 24 Exhaust manifold long sleeve nuts (1.94 inch and 2.84 inch)

\$10.00 each 3/8 inch thick exhaust manifold outlet flanges. Std and HP big block Made in USA

\$7.50 each Metal exhaust flange gasket, 1967-1974, 2 ½” HP big block Made in USA

\$15.00 each heater control cables (Made in USA)

\$5.00 each heater control cable retainer clip (Made in USA)

\$150.00 each 1962-1965 “B” recored heater cores, non-A/C Made in USA

\$315.00 each 1962-1965 “B” recored heater core, w/factory A/C Made in USA

\$12.00 / \$13.00 set 1962-1965 “B” 2 piece non-A/C flex ducts Made in USA

\$49.00 set 1964-1965 “B” 4 piece A/C flex ducts Made in USA

\$51.00 set 1962-1963 “B” 4 piece A/C flex ducts Made in USA

\$115.00 each 1962-1965 “B” Rebuilt heater control vacuum switch, non-A/C (\$100. Exchange) USA

\$120.00 each 1962-1965 “B” Rebuilt heater control vacuum switch, factory A/C (\$105. Exchange) USA

\$99.00 each 1962-1965 “B” Throttle cables (Specify year, make, engine)

\$1.00 each Throttle cable “E” clip

\$99.00 kit 1962-1965 “B” Big Block 4 BBL, Throttle cable bracket, return spring & bracket

\$225.00 each 1962-1965 Shift cables (Made in USA)

\$205.00 each 1962-1965 Park cables (Made in USA)

\$119.00 each 1962-1965 Speedometer cables (Made in USA)

\$69.00/\$89.00 Each 1962-1965 Speedometer cable for ratio adapter or late model transmission Made in USA

\$25.00 Kit 1962-1965 Speedometer cable clamp w/bolt & washer (Made in USA)

\$3.00 each 1962-1965 “A” and “B” body two prong plastic wiring harness retainer

\$1.00 each 3 inch plastic wiring harness retainer (fenderwell and core support)

\$15.00 pair Max Wedge and Race Hemi w/Carter AFB’s throttle return springs - Made in USA

\$30.00 pair Max Wedge and Race Hemi w/Carter AFB’s return spring brackets - Made in

USA

\$200.00 kit Max Wedge linkage kit - Made in USA

\$70.00 set Max Wedge intake plugs w/seals, 6 pcs. Made in USA

\$1.00 each Max Wedge intake plug seals Made in USA

\$250.00 each Max Wedge and Hemi alternator pulley - Made in USA

\$35.00 set Max Wedge exhaust manifold gaskets - Made in USA

\$35.00 set Max Wedge exhaust manifold nuts - Made in USA

\$195.00 each Max Wedge dual choke cable assembly - Made in USA

\$65.00 each Max Wedge engine oil dipstick, and tube w/mounting bracket - Made in USA

\$155.00 each Max Wedge transmission dipstick and tube w/mounting bracket - Made in USA

\$75.00 each Max Wedge master cylinder heat shield - Made in USA

\$60.00 set Max Wedge heater hose brackets (on inner fender) w/hardware/instruction MADE IN USA

\$400.00 pair Max Wedge Air Cleaner set, w/filters, decals, hardware (black) MADE IN USA

\$650.00 pair Max Wedge Air Cleaner set, w/filters, decals, hardware (chrome) MADE IN USA

\$1,995.00 each 1964-1965 Hemi cross ram air cleaner w/filters, decals, hardware (chrome) MADE IN USA

\$2.50 each Air cleaner wing nut MADE IN USA

\$45.00 each 1964 Dodge parking light lens w/gasket

\$65.00 each 1963 Plymouth parking light lens w/gasket - MADE IN USA

\$5.00 each 1963 Plymouth parking light lens gasket MADE IN USA

\$50.00 pair 1963 Plymouth parking light bezel to body gasket MADE IN USA

\$5.00 each 1963 Plymouth park light bezel to body foam gasket MADE IN USA

\$0.50 each 1963 Plymouth parking light lens screws-stainless steel

\$0.50 each 1964 Plymouth parking light lens screws-stainless steel

\$0.75 each 1964 Plymouth parking light housing to bumper screws-stainless

\$69.00 pair 1964 Plymouth parking light lenses w/gaskets

\$195.00 pair 1963-1965 Plymouth back-up light lens/bezel assembly w/gaskets

\$60.00 pair 1963-1965 Plymouth back-up light lenses

\$5.00 each 1963-1965 Plymouth back-up light lens gasket

\$15.00 set 1963-1965 Plymouth back-up light lens and bezel gasket set

\$30.00 each 1961 Plymouth and Dodge, 1963-1965 Dodge, 1963 Valiant, 1960-1964 Chrysler, 1964-1966 Imperial license plate light lens w/gasket

\$50.00 pair 1963-1965 Plymouth license plate lenses w/gaskets

\$4.00 each 1963-1965 Plymouth license plate lens gasket

\$8.00 pair 1963 and 1965 Plymouth "B" body tail light bezel to body seal - all models

\$239.00 pair 1963 Dodge 330 and 440 Tail light lenses

\$395.00 pair 1963 Dodge 330/440 Tail light bezels

\$38.00 pair 1963 Dodge 330/440 Tail light bezel to body gaskets

\$76.00 each 1963 Dodge Polara/Polara 500 tail light lens w/gaskets

\$490.00 pair 1963 Plymouth Tail light bezels

\$5.00 each 1963 Plymouth foam gaskets for tail light assemblies

\$56.00 each 1964 Dodge tail light lens w/gasket

\$56.00 each 1964 Dodge Polara / Polara 500 back-up lens w/gasket

\$49.00 each 1964 Dodge tail light lens bezel

\$1.00 each 1964 Dodge tail light lens to bezel gasket

\$0.30 each Tiny pal nut used on 1964 Plymouth and 1965 Belvedere / Satellite tail panel trim

\$18.00 pair 1964 Polara/Polara 500 tail panel to body seal

\$12.00 pair 1964 Polara/Polara 500 foam tail panel to body gaskets

\$10.00 set (4) 1964 Dodge 330/440 tail light bezel to body seal (rubber bead-replacement)

\$15.00 each 1964 Dodge 330/440 tail light bezel to body seal (rubber pad like original)

\$295.00 pair 1964 Fury and Sport Fury tail light lenses

\$10.00 pair 1964 Plymouth tail light lens to bezel gasket

\$15.00 pair 1964 Plymouth tail light bezel to body seal--except station wagon

\$5.00 each 1964 Plymouth foam gasket for tail light assembly-- except station wagon

\$8.00 pair 1964 Plymouth tail light bezel to body seal --station wagon

\$2.50 each 1962-1965 "B" body station wagon tail gate bezel seal-window mechanism

\$490.00 pair 1965 Coronet and Coronet 440 Tail light bezels

\$225.00 pair 1965 Coronet and Coronet 440 tail light lenses

\$38.00 pair 1965 Coronet and Coronet 440 Tail light bezel to body gaskets

\$20.00 set 1965 Coronet foam tail light gaskets (two large and two small)

\$500.00 pair 1965 Coronet 500 tail light bezels

\$190.00 pair 1965 Coronet 500 tail light assembly top bezel

\$495.00 pair 1965 Belvedere/Satellite tail light bezels

\$205.00 pair 1965 Belvedere I tail light lenses

\$295.00 pair 1965 Belvedere II /Satellite tail light lens w/gasket, w/chrome trim

\$20.00 pair 1965 Plymouth foam gaskets for tail light assembly

\$10.00 each 1964-1965 "B" body Console Shifter Plastic Slide Made in USA

\$10.00 pair 1965-1970 "B" body console lens Made in USA

\$20.00 each 1963-1964 "B" console and 1954-up convertible rear panel courtesy light lens and bezel assembly

\$149.00 pair 1965-1970 "B" body console courtesy light lens & bezel assembly

\$50.00 each 1960-1965 Courtesy dome light lens and bezel

\$17.00 pair some 1964, 1965-1966 "B" body and some "C" body sail panel courtesy lens

\$20.00 each Aluminum trim rings for the above sail panel courtesy lenses

\$14.00 each fuel sending unit socks -5/16 or 3/8 - Made in USA

\$2.00 each fuel sending unit gasket

\$8.00 each fuel sending unit lock ring (galvanized)

\$12.00 each fuel sending unit lock ring (stainless)

\$18.00 each fuel sending lock ring wrench

\$8.00 each fuel sending unit float (brass)

\$10.00 kit 5/16 metal fuel filter w/hoses and clamps

\$15.00 each fuel tank grommet (nitrile) 1967-1974 "A", 1964-1969 "B", 1971-1974 "B" bodies

\$3.00 each fuel filler neck "O" ring, original 1962-1963 "B" body fuel tank

\$15.00 each fuel filler neck grommet, 1963 - 1966 "A" body

\$7.00 each fuel tank "J"-bolt w/nut

\$40.00 each 1962-1965 "B" Fuel sending unit (5/16 or 3/8)

\$89.00 each 1962-1965 "B" Station wagon fuel sending unit (5/16)

\$10/\$14 each Sending unit ground strap (steel or stainless steel)

\$185.00 each 1962 - 1965 "B" body gas tanks (made in Canada by OE manufacturer)

\$40.00/\$60.00 each 1962-1965 "B" gas tank strap (galvanized or stainless steel)

\$2.00 each 5/16 inch Fuel and brake line clips

\$2.50 each 3/8 inch Fuel line clips

\$3.00 each "J" shaped fuel & brake line clips

\$5.00 each 1962-1965 "B" and 1963-1966 "A" Oval plastic firewall plug

\$70.00 each 1962-1965 "B" gas tank filler neck

\$8.00 each firewall drain flap

\$7.00 each 1964-UP? grommet-firewall/speed-o-meter cable

\$8.00 each grommet-firewall/heater core

\$27.00 each grommet-firewall/push button shifter and park cables

\$25.00 each grommet-firewall plate to steering column jacket

\$15.00 each grommet-firewall/emergency brake cable

\$25.00 kit 1962-1965 "B" body-firewall seal kit - Made in USA

\$8.00 kit Cowl vent oval butterfly seals - Made in USA

\$10.00 kit 1963-1966 "A" and 1962-1965 "B" windshield wiper pivot seal kit - Made in USA

\$10.00 pair Windshield wiper arm tension springs, 1962-1964 "B", Probably "A" and "C" - Made in USA

\$1.00 each Correct short push pins for early "B" firewall insulation

\$30.00 kit 1962-1965 "B" body - firewall insulation kit - Made in USA

\$20.00 each 1962-1965 "B" body - heater delete insulation pad, with pins - Made in USA

\$20.00 kit 1962-1965 "B" body-kick panel insulation - Made in USA

\$17.00 kit 1962-1965 "B" Heater box insulation (2 pcs) - Made in USA

\$18.00 kit 1962-1965 "B" A/C box insulation (7 pcs) - Made in USA

\$25.00 each 1963 Plymouth, 1964-1965 "B" Hood insulation (1/2 inch thick flat - not molded) - Made in USA

\$30.00 each 1962 "B" 1963 Dodge Hood insulation (1/2 inch thick flat - not molded) - Made in USA

\$2.00 each 1960-1965 Hood insulation clip

\$38.00 kit 1962-1965 "B" body plug kit

\$28.00 each 1962 "B" body core support to hood seal MADE IN USA

\$30.00 each 1963-1965 "B" core support to hood seal (small) MADE IN USA

\$40.00 each 1963-1965 "B" core support to hood seal (large) MADE IN USA

\$30.00 each 1962-1965 "B" cowl to hood seal

\$40.00 each 1963-1965 Plymouth tailpanel seal

\$40.00 each 1962-1965 "B" station wagon tail panel seal

\$35.00 set 1965 Coronet tail panel seal (where applicable)

\$75.00 pair 1963-1965 Dodge "B" Fillers-rear bumper corner to quarter panel

\$16.00 set L/R 1963 Dodge splash shield seal front fender front shield

\$16.00 set L/R 1963 Plymouth splash shield seal front fender front shield

\$18.00 set L/R 1964 Dodge splash shield seal front fender front shield

\$22.00 set L/R 1964 Plymouth splash shield seal front fender front shield

\$16.00 set L/R 1965 Plymouth splash shield seal front fender front shield

\$19.00 set L/R 1965 Coronet splash shield seal front fender front shield

\$35.00 set L/R 1963-1965 "B" body splash shield seals, front fender, rear shield (specify year and make)

\$205.00 pair 1963-1965 Dodge/Plymouth "B" body, front fender, rear splash shields

\$1.50 each 1962-1972 "B", 1967-1969 "A", 1970-1974 "E", rear splash shield screw w/lg washer

\$33.00 pair 1962-1965 "B" Covers-Inner fender "A" frame adjust access holes

\$8.00 pair 1962-1965 "B" body seal-hangs on frame between core support and K-frame

\$10.00 pair 1962-1965 "B" body seal-covers hole where brake line goes through inner fender

\$10.00 pair 1962-1965 "B" body seal-covers hole where frame, firewall, and floor meet

\$1.00 each Clip for the above frame seals

\$6.00 each 1962-1965 "B" 1963-1966 "A" seal-starter shield w/staples

\$125.00 each 1962-1966 "A" and "B" body two post outside mirror (the "correct" reproduction)

\$10.00 each two post mirror gasket/screw package

\$105.00 pair 1962-1965 "B" body outside door handles w/hardware and gaskets --Made in USA

\$10.00 set outside door handle gaskets, 1963-1966 "A", 1962-1965 "B", and 1967 1/2-1971 truck

\$10.00 set outside door handle gaskets, 1966-1967 "B" body

\$5.00 each Clips, door handle to latch linkage rod

\$2.00 each 1962-1965 door lock gaskets

\$6.00 each 1962-1965 "B" door lock retainer clips

\$252.00 set 1962-1965 "B" body door hinges

\$84.00 each 1962-1965 "B" upper door hinge

\$94.00 each 1962-1965 "B" lower door hinge

\$2.00 each 1962-up? trunk lock and 1966-up? door lock gaskets

\$2.00 each 1962-up? trunk lock and 1966-up? door lock retainer clip

\$6.00 each 1962-1965 Door lock retainer clip

\$15.00 pair 1963-1976 "A", "B", and "C", plastic trunk torsion bar sliders

\$6.00 pair 1962-1974 interior door lock button-chrome or black

\$12.00 pair 1962-1974 interior door lock buttons - red, blue, tan, green

\$6.00 pair Grommet for interior door lock buttons

\$1.10 each Interior door panel mounting clips (will discount for quantity)

\$50.00 pair 1963-1966 "A", "B", and "C" body inside door handles

\$40.00 pair 1963-1966 "A", "B", and "C" body window cranks (4 inch and 6 inch)

\$1.00 each Internal wrenching hex screw for above door handles and window cranks

\$6.00 each 1955-1962, all models, retainer clip for door handles & window cranks. NOS

\$25.00 each 1964-1965 "B" 2 door hardtop interior trim screw kit w/map

\$10.00 each 1965-1965 "B" 2 dr Sedan interior trim screw kit w/map

\$1.50 each Black wear washers for above door handles and window cranks

\$34 ea Ash tray 1964-1966 "A" and "B" rear arm rest / 1967-1969 "A" convertible side panel

\$60/\$70 pair 1964-1966 "A"&"C"/ 1964-1965 "B" arm rest pad-Black/colors

\$74 pair 1964-1966 "A"&"C"/ 1964-1965 "B" arm rest bases-chrome

\$1.00 each Clip nut in door for arm rests MADE IN USA

\$0.75 each 1962-1974 window regulator to channel retaining washer (4 internal prongs)

\$19.00 kit 1962-1965 "B" 1962-1966 "A" Window regulator retaining washers and leather washers

\$61.00 kit 1962-1965 "B" 2door HT, quarter window hardware kit

\$150.00 each 1962-1965 "B" 1963-1966 "A" body radio antenna Made in USA

\$4.00 each 1962-1965 "B" body radio antenna gasket

\$5.00 each Radio antenna wire grommet Made in USA

\$140.00 each 1964-1965 "B" body radio delete plates-Metal like original

\$6.00 each 1962-1963 "B" Speaker delete (low and medium priced cars) Made in USA

\$35.00 each 1962-1966 "A" and "B" body steering column to shaft seal

\$20.00 kit steering knuckle repair kit (seal in this kit is red)

\$12.00 each steering knuckle seal only, black in color

\$279.00 each 1964 "B" Steering wheel black (Belvedere, Fury, Dodge all)

\$279.00 each 1965-1966 "B" Steering wheel - two spoke - black

\$24.00 each clutch fork boot

\$19.00 each 1962-1965 "B", 1963-1971 "C" Firewall clutch rod boot

\$5.00 each 1963-up? most bodies-clutch pedal upstop (rubber)

\$5.00 pair Nylon bushings for z-bar (two pair per z-bar)

\$7.00 each Wire retainer clip for z-bar nylon bushings

\$5.50 each rubber grease seal-ball to z-bar (two per z-bar)

\$2.00 each Nylon wear washers-clutch linkage (three per car)

\$3.00 each Spring clip-clutch linkage (three per car)

\$45.00 Kit 1962-1965 "B" body clutch linkage adjust rod kit

\$85.00 each 1962-1965 "B" body shifter boot console and non-console

\$85.00 each 1962-1965 "B" body chrome shifter boot bezel non console

\$85.00 each 1962-1965 "B" body 4-speed under carpet seal

\$0.25 each 1962-1965 "B" body 4-speed boot screws

\$205.00 each 1963-1965 "B" body 4-speed floor hump (metal like original)

\$95.00 each 1964-1965 "B" and "C" body fiberglass 4-speed console hump

\$169.00 each 1963-1965 "B" body 4-speed crossmember

\$35.00 pair Torsion bar seals and retainer clips "A", "B", and "E"

\$45.00 each 1962-1965 Large boot (most V-8s)-ball and trunnion driveshaft w/clamps

\$375.00 pair 1964 Dodge "C" shaped fender headlight surrounds

\$140.00 pair 1964 Dodge - Teardrop Triad for top of front fender

\$40.00 each 1963 "Fury" fender script

\$45.00 each 1963-1966 "Sport Fury" script (correct zinc diecast)

\$40.00 each 1963-1964 Belvedere "Plymouth" front fender script

\$95.00 set 1963-1964 "B" Zinc die cast "PLYMOUTH" hood/trunk letters

\$95.00 set 1965 "B" Zinc die cast "PLYMOUTH" hood/trunk letters

\$65.00 pair 1964 Plymouth big block hood ornament decals (361, 383, 426) Made in USA

\$450.00 each 1964 Plymouth big block hood ornaments complete w/decals Made in USA

\$95.00 set 1965 Coronet "DODGE" trunk letters

\$65.00 pair 1964 Plymouth big block hood ornament decals (361, 383, 426) Made in USA

\$450.00 each 64 Plymouth big block hood ornaments complete w/decals Made in USA

\$325.00 each 1964 Dodge trunk emblem

\$275.00 each 1965 Coronet and Coronet "440" trunk emblem/bezel

\$18.00 each 1962-1965 Most "B" body glove box

\$25.00 each 1962-1963 "B" body glove box w/factory A/C

\$40.00 pair 1966-1967 "B" body bench seat hinge covers (black or white only)

\$50.00 pair 1962-1965 "B" body bench seat hinge covers (chrome) (specify year)

\$2.00 each Nut - front seat hold down

\$19.00 pair 1962-1965 stops - 2 door seat back (plastic cup)

\$320.00 pair 1963-1966 "A" and 1964-1965 "B" bodies-Convertible top latch mechanism

\$70.00 pair 1963-1966 "A" and 1963-1965 "B" bodies-Convertible top guide pin (stainless)

\$12.00 pair 1962-1970 "A", "B" and "C" bodies convertible top pin socket (plastic)

\$30.00 set 1963-1971 "A", "B", "C", & "E" Convertible door alignment wedges w/screws

\$0.50 each convertible top boot snap studs w/screw

\$4.00 set 1964-1965 "B" convertible sun visor screws (4 countersunk and 2 round head)

\$475.00 pair Pot metal, top of quarter panel belt trim, 1964 Plymouth and 1965 Belvedere II convertible

\$19.00 pair 1962-1965 Plastic sun visor tips

\$100.00 pair 1962-1965 Sunvisors - several colors

\$60.00 each 1962-1965 "B" body - accelerator pedal MADE IN USA

\$5.00 set 1962-1965 "B" body - accelerator pedal pivot gasket and grommet set MADE IN USA

\$10.00 each 1962-1965 "B" body - accelerator pedal roller

\$8.00 each 1962-1966 "A" and 1962-1965 "B" body clutch and brake pedal pads (manual

trans) – Made in USA

\$20.00 each 1962-1966 “A” and 1962-1965 “B” body brake pedal pad (auto trans)– Made in USA

\$12.00 each 1963-1965 “A” and “B” body emergency brake pedal pad – Made in USA

\$12.00 each 1964-1965 “B” and “C” body E-brake pedal upstop – (NOS)

\$130.00 set 1962-1965 “B” E-brake cables, connectors, clips, grommet

\$5. 00 each Retainer clip, front e-brake cable, both ends – Made in USA

\$1.25 each Clip, Brake flex hose to body

\$50.00 set 1962-1965 “B” body big block engine mount brackets w/hardware

\$20.00 each Late 1962-1965 “B” body motor mounts

\$200.00 pair Late 1962-1965 “B” Poly Lock motor mounts MADE IN USA

\$99.00 each 1963-1965 “B” Poly transmission mount (Auto/ 3 sp Manual) MADE IN USA

\$99.00 each 1963-1966 “A”, 1962-1965 “B” 4-speed transmission mount MADE IN USA

\$99.00 each 1962-1965 “B” Poly trans adapter mount for use w/ late model torquefite MADE IN USA

\$4.00 each 1962-1963 Plymouth and Dodge wedge shaped bumper-fender/hood (2/car) MADE IN USA

\$4.00 each 1964 Plymouth wedge shaped bumper - fender/hood (2/car) MADE IN USA

\$2.50 each 1965 Plymouth and Dodge wedge shaped bumper - fender/hood (4/car) MADE IN USA

\$2.00 each round rubber bumper - fender/hood at rear corners (2/car) MADE IN USA

\$3.00 each round rubber bumper - hood adust, w/stud

\$2.00 each round rubber bumper - license plate mounting frame MADE IN USA

\$2.00 each 1962-1969 rubber door bumper (2/door) specify year MADE IN USA

\$3.00 each 1962-1967 “B” trunk bumper (2/car) specify year and make MADE IN USA

\$1.50 each Glove box bumpers MADE IN USA

\$1.00 each Ash tray bumpers MADE IN USA

\$1.00 each 1965 and earlier license plate screw/nut combo

\$1.50 each plastic snap in license plate nut

\$1.50 each fast twist license plate screw-used with plastic nut above

\$100.00 each 1962-1965 "B" body windshield gasket (specify year, make, model)

\$90.00 each 1962-1965 "B" body rear window gasket (specify year, make, model)

\$230.00 pair 1962-1965 "B" body station wagon quarter window gasket w/lock strip

\$22.00 set 1962-1965 "B" body windshield reveal moulding clip/screw package

\$13.00 set 1962-1965 "B" body convertible windshield reveal molding clip/screw package

\$27.00 set 1962 "B" body rear window reveal moulding clip/screw package

\$15.00 set 1963 "B" body rear window reveal moulding screw package

\$18.00 set 1964-1965 "B" body sedan rear window moulding clip/screw package

\$33.00 set 1964-1965 "B" body hardtop rear window moulding clip/screw package

\$0.10 each Wheel lip and some windshield moulding screws

call for quote - Side and Rocker moulding clips for some of the 1962-1966 Mopars

\$82.00 kit 1964 Plymouth Fury / Sport Fury, side molding clip kit

\$150.00 kit 1964 Dodge Polara/Polara 500 side molding clip kit

\$26.00 kit 1964-1965 Dodge "B" Belt line moulding clips

\$0.20 each 10-24 flange nut for moulding clips

\$1.00 each folded sheetmetal acorn nut for ends of door side mouldings

\$0.15 each stamped steel thread cutting nuts for moulding clips and script (1/8, 5.32, 3/16)

\$0.30 each tube nuts- for script w/1/8 stub and 3/16 hole in the body

\$0.50 each 10-24 thread "U" type foldover nut

\$55.00 pair 1963-1966 "A" /1962-1965 "B" body vent window frame to "A" pillar seal

\$195.00 pair 1964-1965 "B" vent window triangle seal - 2dr HT and Convertible

\$225.00 pair 1962-1965 "B" vent window triangle seal - 2dr and 4dr Sedans MADE IN USA

\$10.00 set 1962-1965 "B" body vent window bottom trim gasket (1 set/car)

\$215.00 set 1962-1965 "B" body, inner & outer trim lower trim for the vent windows

\$45.00 pair Rubber stop, top of vent window divider channel, HT/Conv, 1962-1965 "B" - MADE IN USA

\$20.00 each 1962-1965 "B" Support bracket-Bottom of vent channel to bottom of door

\$19.00 pair 1962-1965 "B" body-Plastic tip for vent window handles

\$90.00/\$95.00 set 1962-1965 "B" body window felts (specify year, make, and model)

\$30.00 each 1962-1965 "B" body station wagon tail gate window inner felt

**\$40.00 kit Mid year 1962-1965 "B" and 1963-1966 "A" tailgate window outer weatherstrip
Made in USA**

\$3.00 each Window rivet, 1962-1970 "B", 1963-1972 "A", NOS

**\$9.00 each Mid year 1962-1965 "B" tail gate window channel slide to regulator bolt Made
in USA**

\$30.00 each 1962-1965 "B" body station wagon lower tail gate seal

\$8.00 set 1962-1965 "B" body station wagon window channel liner

**\$70.00 set Station wagon roof rack rubber pads and strips, most bodies 1962-1966 MADE IN
USA**

\$75.00 set 1962-1965 "B" body sedan-window channel run. 2 door and 4 door Made in USA

**\$3.00 foot 1962-1965 "B" body vent window divider channel liner (7 foot sedan and 11 foot
hard top and convertible)**

\$85.00 each 1962-1965 "B" body convertible header seal

\$45.00 set 1962 "B" body convertible roof rail seals

\$90.00 set 1963-1965 "B" body convertible roof rail seals

\$2.00 each Grommet - Convertible top pump mounting

\$17.00 each 1963-1965 "B" Convertible trunk divider Made in USA

\$15.00 each 1963-1965 "B" Convertible seat back panel Made in USA

\$90.00 pair 1962-1965 "B" body-roof rail seals - 2 and 4 door hardtop

\$10.00 pair 1962-1965 "B" body foam seal, between the roof & roof rail seal retainer Made in USA

call for quote - Carpet by Trim Parts for 1962 to 1965 Mopars - (specify year, make, and model)

\$65.00 set Door jamb striker plates w/shims & screws. 1964-1966 "A". 1964-1970 "B", 1966-1968 "C", 1967-1971 Dodge Truck

\$50.00 / \$55.00 pair "U" shaped seal on "B" pillar; 1962-1965 "B" body 2dr HT and Convertible

\$1.00 each Nickel plated plug buttons, latch side of doors, 2 per door, 1962-1965 "B" body

\$16.00 set 1962-1964 "B" body 4dr H.T. "B" pillar vertical weatherstripping

\$5.00 foot 1962-1965 Windlace specify body style and color

\$8.75 pair 1962-1965 Compact windlace-Used around quarter window on 2dr. sedan

\$10.00 each 1964-1965 Compact windlace-used on rear window-2dr/4dr sdn and 4dr HT

\$98.00 set 1963-1965 "B" body outer sill plates only w/screws MADE IN USA

\$195.00 set 1962-1965 "B" body inner sill plates onl MADE IN USA

\$290.00 set 1963-1965 "B" body inner and outer sill plates with screws MADE IN USA

\$20.00 each 1963-1970 "B" body trunk seal

\$20.00 each 1962 "B" body trunk seal

\$30.00 pair 1963-1965 Plymouth /1962-1965 Dodge "B" trunk well extension covers

\$17.00 each 1962-1965 "B" body seat back/trunk divider

\$585.00 each 1962-1965 "B" Mopar Trunk floor pan

\$135.00 each 1962-1965 "B" Trunk floor extensions

\$166.00 each 1963-1965 "B" Plymouth, rear lower quarter panel patch, wheel well to bumper

\$625.00 each 1963-1965 Plymouth "B" body, [major quarter panel](#)

\$150.00 each 1963-1965 Plymouth "B" body [outer wheel houses](#)

\$150.00 each 1963-1965 Plymouth "B" body [inner wheel houses](#)

\$105.00 set 1963-1965 "B" body lower rear patch w/brace section, front fender

\$95.00 each 1963-1965 "B" Moulded trunk mats

\$585.00 each 1962-1965 "B" Complete one piece floor pan w/e-brake cable brackets

\$179.00 each 1962-1965 Plymouth, 1962 and 1965 Dodge "B" rear foot pans-2 pcs-L&R (\$340. for both)

\$340.00 each 1963 Dodge front valance, under the bumper

\$330.00 each 1963 Dodge rear valance

\$340.00 each 1963 Plymouth front valance, under the bumper

\$387.00 each 1963, 1964 and 1965 Plymouth front bumpers

\$315.00 each 1963-1965 "B" body door skins

\$8.00 pair 1962 "B" body, seal-front edge of quarter glass for HT and Conv. (not flocked)

\$35.00 pair 1967-1972 "A" body, 1963-1970 "B" body, 1965-1967 "C" body, seal-front edge of quarter glass for HT and Conv. (flocked)

\$45/\$75 pair 1964-1966 "B"body 727 transmission lines - original material / Stainless steel

\$65/\$75 set 1962-1965 "B" body Engine compartment 3 brake line kit - OM or S/S

\$29/\$37 set 1962-1965 "B" body Rear Axle 2 brake line kit - OM or S/S

\$22.00 kit 1962-1965 "B" rear axle brake hose bracket w/bolt and brake line clip MADE IN USA

\$65.00 set 1964-1965 "B" body 3 piece brake line set (engine compartment)

\$10.00 set Axle adjust lock pawl/flanged nut-for 8 3/4 right axle

\$4.00 pair Foam seals for rear axle housing ends w/tapered axles

\$10.00 set Foam and metal seals for rear axle housing ends wo/tapered axles (4 pcs)

\$2.00 each Lug nut 1/2-20 x 3/4 Hex RH

\$2.00 each Lug nut 1/2-20 x 3/4 Hex LH

\$2.25 each Bumper bolts - 7/16 Complete with washers and a nut

\$1.25 each Bumper bolt - 1/4 inch w/nut (For 1962-1965 "B" Station Wagon back-up lights)

\$38.00 pair 1963-1965 Plymouth and 1963 Dodge "Teardrop" shaped bumper guard pad only

\$195.00 pair 1963 Plymouth Rear bumper guards complete with pads

\$150.00 pair 1962-1972 "B" and 1970-1974 "E" bodies, upper control arms w/ball joints and bushings

\$14.00 pair Upper control arm rubber bumpers

\$20.00 set Leaf spring shackle bushings (set of 8)

\$40.00 pair 1962-1974 "B" body, Leaf spring shackles w/bushings

\$25.00 set Leaf spring "U" bolts w/tall nuts, for 3 inch housing (8 1/4, 8 3/4, Dana 60, etc.)

\$46.00 set Leaf spring "U" bolts w/tall nuts, for 3" housing (8 1/4, 8 3/4, Dana 60, etc.) NOS

\$3.50 each Leaf spring hanger to frame studs MADE IN USA

\$1.00 each Leaf spring hanger to frame nuts MADE IN USA

\$12.00 each Leaf spring front eyelet bolt MADE IN USA

\$4.00 each Leaf spring front eyelet nut for above bolt MADE IN USA

\$10.00 set(4) 1962-1974 "A", "B", "E" Washers, for lower mount, rear shock

\$233.00 each 1962-1965 "B" body Windshields -- Clear or Tinted

\$359.00 each 1963-1965 "B", rear glass, sedan or hardtop - Clear or Tint

\$197.00 each 1962-1965 "B" body, door glass, 2 door sedan - Clear or Tint

\$197.00 each 1962-1963 "B" body, door glass, 2 door hardtop & 1962-1965 Convertible - Clear or Tint

\$134.00 each 1963-1965 "B" body, quarter glass, 2 door sedan, hardtop & convertible -Clear

or Tint

\$89.00 each 1962-1965 "B" body, vent glass, all models – Clear or Tint

\$10.00 each 1962-1974 "B" and 1970-1974 "E" spare tire hold down wing nut

\$30.00 each 1962-1965 "B" Spare tire hold down hook MADE IN USA

\$7.00 each "K" frame bolts MADE IN USA

\$1.00 each Oil pan bolts MADE IN USA

\$1.00 each Crank pulley bolts, 3/4 inch or 7/8 inch long MADE IN USA

\$2.50 each Horn bolts MADE IN USA

\$2.00 each Bolts, Radiator & bottom of vent frame to bracket MADE IN USA

\$0.60 each Heater box firewall nuts MADE IN USA

\$1.50 each Educated nut, spindle cotter pin MADE IN USA

\$14.00 each Spindle hub cover

\$1.25 each Valve cover hold down studs MADE IN USA

\$1.50 each Valve cover hold down nuts MADE IN USA

\$99.00 each 1962-1965 "B" Exhaust hanger body bracket RH pipe MADE IN USA

**\$35.00 each 1962-1970 "A" and "B" body, Main exhaust hanger, 1 7/8 inch and 2 1/4 inch
MADE IN USA**

\$55.00 each 1962-1964 Max Wedge, 2 inch Main exhaust hanger USA

\$44.00 each 1962-1965 "B" body, Tail pipe hanger MADE IN USA

\$12.00 each 1962-1965 2 1/4 inch tail pipe clamp, use with above hanger MADE IN USA

\$17.00 each 1962-1965 2 inch tail pipe clamp, use with above hanger MADE IN USA

0.40 each Wave washer, emergency brake lever to brake shoe MADE IN USA

\$12.00 each 1962-1964 Push button, park lever overcenter spring MADE IN USA

\$125.00 each - 1965 Dodge Coronet hood trim - MADE IN USA

\$225.00 each 1963-1964 Plymouth stainless steel trunk trim (except 1964 Belvedere) MADE IN USA

\$40.00 set 1963-1964 Plymouth stainless trunk trim clips (except 1964 Belvedere) MADE IN USA

\$15.00 each Bee Hive hood pop-up springs, most 1963-1966 "A", "B", "C" and Imperial

\$10.00 each 1964 Plymouth hood safety latch spring USA

All decals made in USA

\$7.00 each Decals - Air cleaner, anti-freeze, battery booster, jack instruction, jack base

\$5.00 each Decals -426 as-is no warranty, convertible top lift pump fluid

\$5.00 each Decals - Jack base, 426 as-is no warranty, Convertible top lift pump fluid

\$15.00 pair Decal - Max wedge valve covers

\$7.00 each Decal - AirTemp window sticker

\$25/\$45 each 1962-1965 "B" body, package tray - MADE IN USA

\$12.00 each 1962-1965 "B" body package tray jute - MADE IN USA

\$85.00 each 1962-1965 Headliners - MADE IN USA

\$20.00 each 1962-1965 Headliner insulation - MADE IN USA

\$15.00 pair 1963-1965 "B" Body sail panel boards MADE IN USA

\$14.00 each 1962-1965 Fuel tank pad - MADE IN USA

\$259.00 each 1963 Plymouth instrument cluster bezel dash pad

\$10.00 each Light blinder, heater control buttons, 1962-1963 Plymouth - MADE IN USA

\$10.00 each Light blinder, shifter push buttons, 1962-1963 Plymouth - MADE IN USA

\$590.00 each 1964 Plymouth dash pad - MADE IN USA

\$625.00 each 1964-1965 Dodge and 1965 Plymouth Dash Pad MADE IN USA

\$125.00 each 1962-1965 "B" Heater delete deflector cone - MADE IN USA

\$35.00 kit 1962-1965 "B" body fender bolt kit

(Prices subject to change) Last revised January 18, 2018

Tons of used 1962-1965 "B" body parts also available for sale.

Coming Soon:

1965 "B" body Dodge filler - rear bumper corners to quarter panel

1963 Dodge park light lenses


1963-1965 Dodge "B" body, front and rear bumpers

Clip 1963 Plymouth park bezel to fender, 1964 Plymouth & 1965 Belvedere tail panel

Gas cap 1962-1966 "A" bodies and 1962-1965 "B" body station wagon

1963 Plymouth Sport Fury sail panel emblems (3 per side)

1964 Sport Fury trunk emblems (3 pieces)



770-964-4441
joesuchy64@gmail.com

JOE SUCHY
Mopar Cars & Parts

SPECIALTIES
62-63-64-65 Mopar "B" Bodies
Mopar "B" & "RB" Engines



8355 Spence Road
Fairburn, GA 30213

Joe Suchy also has tons of used 1962-1965 "B" body parts also available for sale.

Contact information at left.

Tell Joe that Gary H. from the 1962 to 1965 Mopar Web site says hello!

Suchy Parts Version 1-18-2018

NOTE: These listings are placed here as is and as received. BE CAREFUL! Do your best to confirm the person actually has the item to sell before any money changes hands! Do not buy if you are not positive! Remember C.O.D. is an option, too. In any case, in the U.S.A. use a postal money order to pay for the item, and send payment by U.S. Mail. While we assume no liability for these listings, we want to help people maintain and restore 1962 to 1965 Mopars. Buyer beware is a good motto to remember in any Web transaction!

Please contact the advertiser to verify the accuracy of the information contained in these ads. The advertisers and the 1962 to 1965 Mopar Web Site expressly disclaim any and all liability for typographical errors, mistakes or misprints.

2018 Updates

Wanted: 1962 Dodge Polara (B-body) hood. Fiberglass or steel. Must be in very nice shape. I live in PA. Call Wayne at five seven zero 452 9017

For Sale: 1964 Chrysler New Yorker 4 door hardtop, 413, black silver blue interior. Rebuilt front end suspension. New exhaust system. Very Little rust. Need paint and interior work. Have spare dash and other parts. \$4000.00 obo.



For Sale: 1962 Plymouth Belvedere. New 413 motor, new suspension, new paint, new interior. About 50 miles since completed. \$13,000. need room, wife complaining. Simi Valley, Ca (Los Angeles area) Mike 805 217 - 1951

For Sale: 1962 Plymouth Sport Fury Many NOS parts included. Car blasted and metal work done in 1992. Painted partially white and the rest in epoxy primer. Suspension rebuilt, HD torsion bars and disc brakes, 1969 Charger rear end, Super Stock springs. Needs completion. \$8000. Dan 716 622 7352

NOTE: These listings are placed here as is and as received. BE CAREFUL! Do your best to confirm the person actually has the item to sell before any money changes hands! Do not buy if you are not positive! Remember C.O.D. is an option, too. In any case, in the U.S.A. use a postal money order to pay for the item, and send payment by U.S. Mail. While we assume no liability for these listings, we want to help people maintain and restore 1962 to 1965 Mopars. Buyer beware is a good motto to remember in any Web transaction!

Please contact the advertiser to verify the accuracy of the information contained in these ads. The advertisers and the 1962 to 1965 Mopar Web Site expressly disclaim any and all liability for typographical errors, mistakes or misprints.